

The information contained in this documentation is the property of MAZeT. Photocopying or otherwise reproducing any part of the catalog, whether electronically or mechanically, is prohibited, except where the express permission of MAZeT GmbH has been obtained. In general, all company and brand names, as well as the names of individual products, are protected by brand, patent or product law.

VERSION CHANGE

NO.	ISSUE	APPROVED
1	V 2.1	2009-02-26

Data Sheet

MTCS - TIAM2

**Integral True Color Sensor IC
XYZ Tri-stimulus function
with integrated amplifier**

Table of Contents

1	1 INTRODUCTIONS.....	2
2	2 APPLICATIONS.....	2
3	3 FEATURES.....	2
4	4 BLOCK DIAGRAM.....	3
5	5 SPECTRAL CHARACTERISTIC	4
6	6 DESCRIPTION OF INTERFACES	5
6.1	6.1 Adjustment of Transimpedance	5
6.2	6.2 Power-down Modus.....	5
7	7 SPECIFICATION, MAX/MIN RATINGS, OPERATING CONDITIONS	6
7.1	7.1 ELECTRICAL AND OPTICAL CHARACTERISTICS OF PHOTO DIODE ARRAY	6
7.2	7.2 ELECTRICAL CHARACTERISTICS.....	6
7.3	7.3 AC/DC-Characteristics.....	7
7.4	7.4 Maximum Conditions.....	9
8	8 PACKAGE AND OUTLINE DIMENSIONS	10
9	9 PIN-CONFIGURATION.....	11
10	10 SOLDERING PROFILE.....	12
11	11 HANDLING AND STORAGE	12
12	12 PACKING INFORMATION.....	12
13	13 APPLICATION NOTE	13
13.1	13.1 Circuit.....	13
13.2	13.2 Broadband source of lighting.....	13
13.3	13.3 Angle of incidence	13
14	14 ORDERING INFORMATION.....	15

MAZeT GmbH Sales
Göschwitzer Straße 32
07745 JENA / GERMANY
Phone: +49 3641 2809-0
Fax: +49 3641 2809-12
E-Mail: sales@MAZeT.de
Url: <http://www.MAZeT.de>

Approvals	Date
Compiled:	2009-02-26
Checked:	2009-02-26
Released:	2009-02-26

MAZeT GmbH	
Status: valid	
DOC. NO.: DB-06-202	Page 1 of 15

VERSION		
NO.	ISSUE	APPROVED
1	V 2.1	2009-02-26

1 INTRODUCTIONS

MTCS – TIAM2 is a high integrated True Color Sensor IC with integrated trans-impedance amplifier in a small plastic package on a PCB-carrier. It includes the standard XYZ (RGB) filters based on the known observer function CIE 1931. So the sensor is specialized for fast and absolute, high accuracy color measurement.

The True Color Sensors are made of 19 x 3 photo diodes (special PIN silicon technology with blue-enhanced) integrated on chip. The diodes are carried out as segments of a multiple-element hexagonal matrix structure with the diameter of 2,0 mm.

The technology Si-PIN photo diodes allow signal frequencies up to high-range. In order to achieve a small cross talk between the colored photodiodes the individual sectors were separated from each other by additional structures – separate diode. The photodiodes are sensitized on chip with high-quality and long-time stabile dielectric spectral filters (named True Color Filter¹). These filters correspond to the primary **color standard CIE 1931 (Commission Internationale de l'Eclairage or International Commission on Illumination) and/or the German standard DIN 5033.**

2 APPLICATIONS

- General Color measurements, checks and regulations
- Portable color reader for consumer and industrial applications
- Closed loop for RGB lighting (SSL) – regulation of temperature shifts
- Sensor for display color adjustment and backlight/contrast control
- Color sensitive sensor for “True Color” reproduction and system calibration
- Detector for various light sources, mood lighting, regulated color temperature

3 FEATURES

- high-resolution conversion of colored light to voltages
- simultaneous measurement of XYZ three colors
- high sensitiveness, transmission, signal frequency
- no ageing of the filter, high temperature stability
- reduced cross talk and linear amplifying
- programmable adjustment of transimpedance
- power down feature
- small in size, lead free
- alike tri-stimulus interference filter for color measurement to DIN 5033 (CIE 1931)
- LCC package (SMD)
- EU RoHS-compliant²

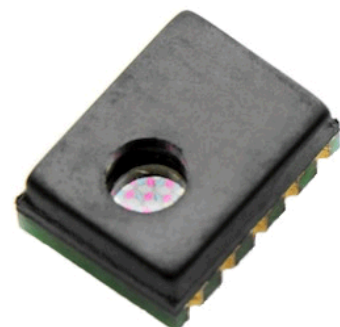


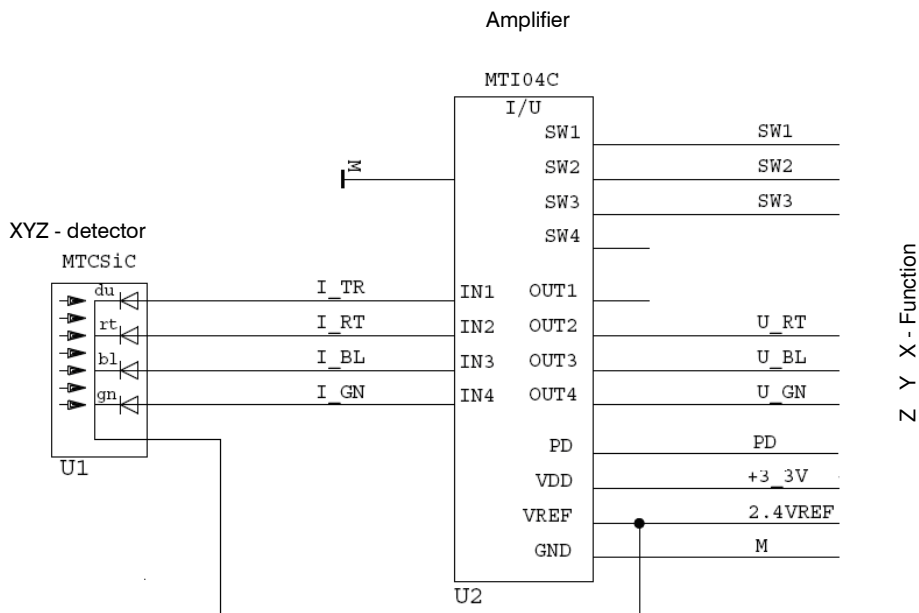
Figure 1: TIAM2

¹ The new generation of JENCOLOR sensors is committed to implementing (see relative sensitivity) the standard distribution functions as defined under DIN 5033 Part 2 – Color Measurement; CIE 1931 Standard Colorimetric Systems. This implementation method allows colors to be determined according to the three-range procedure that is defined in part 6 of DIN 5033.

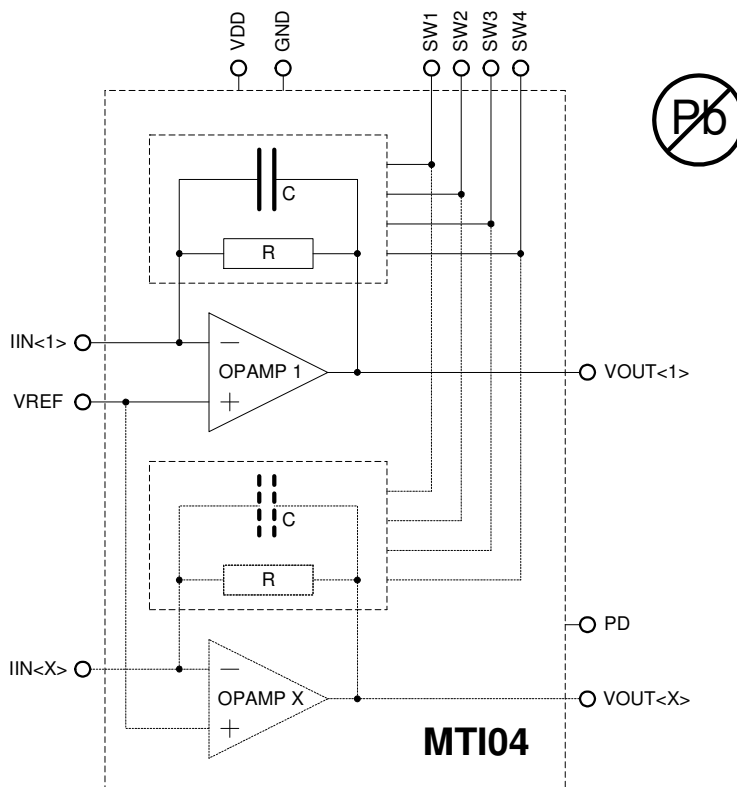
² EU RoHS: Directive 2002/95/EC of the European Parliament and of the Council of 27 January 2003 on the restriction of the use of certain hazardous substances in electrical and electronic equipment.

VERSION		
NO.	ISSUE	APPROVED
1	V 2.1	2009-02-26

4 BLOCK DIAGRAM



*On Chip detector MTCSi and amplifier MT104C
(without temperature compensation via external resistor)*



Amplifier corresponds the MT104C

VERSION		
NO.	ISSUE	APPROVED
1	V 2.1	2009-02-26

The integral XYZ color filters on the photodiode array detect the color components of the light falling on the sensor. The photodiodes convert the XYZ light components into photocurrents. Each photocurrent represents X or Y or Z depend on the spectral response shown in the figure below. The integrated transimpedance amplifiers convert the photocurrents to analog voltage outputs. After an offset-correction and calibration these voltages are direct coordinates for the standard CIE1991 / DIN5033 color space. The voltage output of each XYZ channel increases linearly with increasing light intensity.

Please note also the different manner and stages for the transimpedance amplifiers. The amplifier could be switched in process into a higher/lower sensitiveness depend on the light intensity falling on the sensor (see adjustment of transimpedance).

5 SPECTRAL CHARACTERISTIC

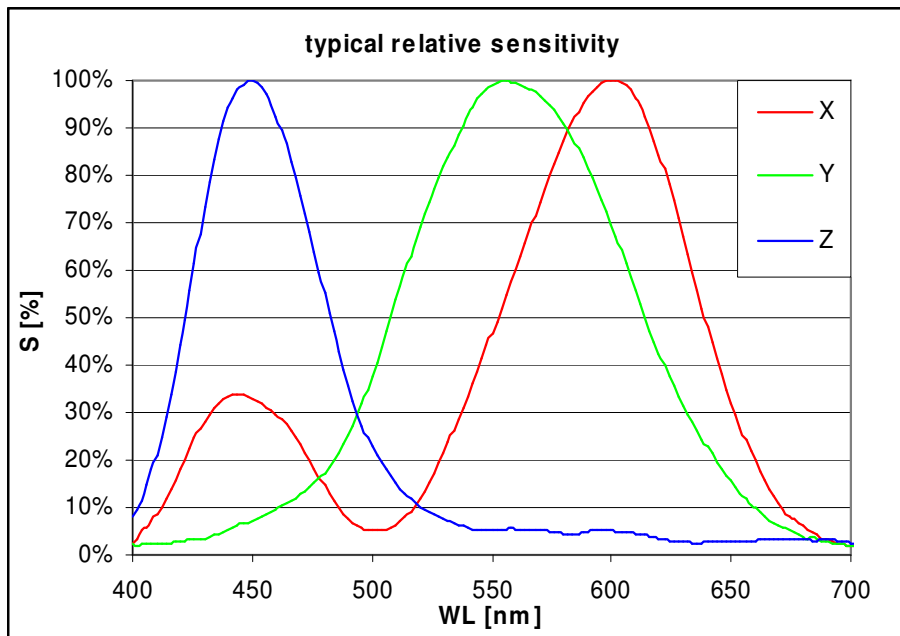


Figure: Typical (relative) sensitivity (XYZ) of the color sensor^{3, 4} scanned by width broadband light (FWHM 30nm) and limited angle of incidence (<10°)⁵

³ Typical characteristic sensitivity; scanned by monochromatic light with FWHM 27nm, see also chapter 13.2.

⁴ Please note, there are some technical differences between the national or international standards for color measurement based on the tri-stimulus observer function and our realized sensor function. Furthermore each sensor has small production based tolerances of nearly 1% variation referred to the wavelengths. So we recommend calibrating the sensor to achieve best results with a small error in the color space. The calibration depends on different conditions - the sensor, light source, color target, algorithm for calibration and all interferences hit the sensor. In most of cases it's possible to achieve always better results than human eyes. Please ask our technical staff for support if you want to calibrate your sensor system.

⁵ See chapter 13.3

NO.	ISSUE	APPROVED
1	V 2.1	2009-02-26

6 DESCRIPTION OF INTERFACES

signal name	typ.	a/d ^a	function
VDD	input	a/d	power supply
GND	input	a/d	power supply
VREF	input	a	reference voltage
SW1	input	d	input 1 for adjustment of transimpedance of MTI-amplifier (pull down)
SW2	input	d	input 2 for adjustment of transimpedance of MTI-amplifier (pull down)
SW3	input	d	input 3 for adjustment of transimpedance of MTI-amplifier (pull down)
PD	input	d	power down modus (pull down)
VOUT<n>	output	a	analog voltage output of amplifier channel n for X Y Z function of detector (see chapter 0)

a.) analog or digital

6.1 Adjustment of Transimpedance

settings of digital inputs			transimpedance R
SW1	SW2	SW3	
VDD	VDD	VDD	20M Ω – gain 1
GND	VDD	VDD	10M Ω – gain 2
GND	VDD	GND	5M Ω – gain 3
VDD	GND	VDD	2M Ω – gain 4
GND	GND	VDD	1M Ω – gain 5
VDD	GND	GND	500k Ω – gain 6
VDD	VDD	GND	100k Ω – gain 7
GND	GND	GND	25k Ω ^b – gain 8

b.) default by pull down

6.2 Power-down Modus

settings of digital input	bias current of the IC
PD = 1	
VDD	
GND	typical

c.) default by pull down

NO.	ISSUE	APPROVED
1	V 2.1	2009-02-26

7 SPECIFICATION, MAX/MIN RATINGS, OPERATING CONDITIONS

7.1 ELECTRICAL AND OPTICAL CHARACTERISTICS OF PHOTO DIODE ARRAY

($T_A = 25^\circ\text{C}$; per single diode)

Parameter	Symbol	Condition	min.	typ.	max.	Unit
Diameter of the light sensitivity area	D			2,0		mm
Light sensitivity area per single color array (19 diodes)	A			0,76		mm ²
Typical photo diode sensitivity of color ranges	S_{max}	$\lambda_z = 445 \text{ nm}$ $\lambda_y = 555 \text{ nm}$ $\lambda_{\text{xk}} = 445 \text{ nm}$ $\lambda_{\text{xI}} = 600 \text{ nm}$	0,21 0,30 0,11 0,31	0,23 0,33 0,12 0,35	0,25 0,36 0,13 0,38	A/W
Spectral tolerance of filter curve (See also chapter 13.3)	$\Delta\lambda(\lambda)$				$<1\%*\lambda$	nm
Reverse voltage	V_R		0	2,5	5	V
Dark current	I_R	$V_R = 2,5\text{V}$			10	pA
Noise equivalent power	NEP	$f_R = 100 \text{ Hz}$			$<10^{-13}$	W/ $\sqrt{\text{Hz}}$ z
Cross-talk					<1	%
Angle of incidence	φ	$\Delta\lambda_{(\text{Filter})} < 1\%*\lambda$			10	Grad

7.2 ELECTRICAL CHARACTERISTICS

All voltages are referenced to GND = 0V.

Parameter	Symbol	Condition	min.	typ.	max.	Unit
power supply	VDD		2.7	3 to 5	5.5	V
Bias current MTI04	I(VDD)	27°C, VDD=5.5V		2.5	4.0	mA
Bias current MTI04 (power down mode)	I(VDD)	PD=VDD			8	μA
reference voltage	VREF		0.4		VDD-0.4	V

NO.	ISSUE	APPROVED
1	V 2.1	2009-02-26

7.3 AC/DC-Characteristics

Unless otherwise specified the data in this table is valid for $T_{OP} = 27^{\circ}\text{C}$ and $V_{DD} = 5\text{V}$. All voltages are referenced to $\text{GND} = 0\text{V}$.

Parameter	Symbol	Condition	min.	typ.	max.	Unit
Gain selection (feedback resistor)	R	gain 20M Ω	14000	20000	26700	k Ω
		gain 10M Ω	7000	10000	13350	k Ω
		gain 5M Ω	3500	5000	6700	k Ω
		gain 2M Ω	1400	2000	2670	k Ω
		gain 1M Ω	700	1000	1335	k Ω
		gain 0,5M Ω	350	500	670	k Ω
		gain 0,1M Ω	70	100	133	k Ω
		gain 0,025M Ω	17	25	34	k Ω
Irradiance Responsivity gain 20M Ω	S_{\max}	$\lambda_z = 445 \text{ nm}$ $\lambda_y = 555 \text{ nm}$ $\lambda_{xk} = 445 \text{ nm}$ $\lambda_{xl} = 600 \text{ nm}$		34,9 50,1 18,2 53,2		mV/ ($\mu\text{W}/\text{cm}^2$)
Irradiance Responsivity gain 10M Ω	S_{\max}	$\lambda_z = 445 \text{ nm}$ $\lambda_y = 555 \text{ nm}$ $\lambda_{xk} = 445 \text{ nm}$ $\lambda_{xl} = 600 \text{ nm}$		17,5 25,1 9,1 26,6		mV/ ($\mu\text{W}/\text{cm}^2$)
Irradiance Responsivity gain 5M Ω	S_{\max}	$\lambda_z = 445 \text{ nm}$ $\lambda_y = 555 \text{ nm}$ $\lambda_{xk} = 445 \text{ nm}$ $\lambda_{xl} = 600 \text{ nm}$		8,7 12,5 4,5 13,3		mV/ ($\mu\text{W}/\text{cm}^2$)
Irradiance Responsivity gain 2M Ω	S_{\max}	$\lambda_z = 445 \text{ nm}$ $\lambda_y = 555 \text{ nm}$ $\lambda_{xk} = 445 \text{ nm}$ $\lambda_{xl} = 600 \text{ nm}$		3,5 5,0 1,8 5,3		mV/ ($\mu\text{W}/\text{cm}^2$)

DATA SHEET MTCS – TIAM2				VERSION		
				NO.	ISSUE	APPROVED
				1	V 2.1	2009-02-26
Parameter	Symbol	Condition	min.	typ.	max.	Unit
Irradiance Responsivity gain1MΩ	S_{max}	$\lambda_z = 445 \text{ nm}$ $\lambda_y = 555 \text{ nm}$ $\lambda_{xk} = 445 \text{ nm}$ $\lambda_{xl} = 600 \text{ nm}$		1,75 2,51 0,91 2,66		mV/ ($\mu\text{W}/\text{cm}^2$)
Irradiance Responsivity gain0,5MΩ	S_{max}	$\lambda_z = 445 \text{ nm}$ $\lambda_y = 555 \text{ nm}$ $\lambda_{xk} = 445 \text{ nm}$ $\lambda_{xl} = 600 \text{ nm}$		0,874 1,254 0,456 1,330		mV/ ($\mu\text{W}/\text{cm}^2$)
Irradiance Responsivity gain0,1MΩ	S_{max}	$\lambda_z = 445 \text{ nm}$ $\lambda_y = 555 \text{ nm}$ $\lambda_{xk} = 445 \text{ nm}$ $\lambda_{xl} = 600 \text{ nm}$		0,175 0,251 0,091 0,266		mV/ ($\mu\text{W}/\text{cm}^2$)
Irradiance Responsivity gain0,025MΩ	S_{max}	$\lambda_z = 445 \text{ nm}$ $\lambda_y = 555 \text{ nm}$ $\lambda_{xk} = 445 \text{ nm}$ $\lambda_{xl} = 600 \text{ nm}$		0,044 0,063 0,023 0,067		mV/ ($\mu\text{W}/\text{cm}^2$)
signal frequency	f_{3dB}	stage 20MΩ, T_{OP}	4	6	16	kHz
		stage 10MΩ, T_{OP}	7	11	28	kHz
		stage 5MΩ, T_{OP}	11	16	42	kHz
		stage 2MΩ, T_{OP}	18	26	66	kHz
		stage 1MΩ, T_{OP}	25	35	95	kHz
		stage 0,5MΩ, T_{OP}	35	50	130	kHz
		stage 0,1MΩ, T_{OP}	80	120	280	kHz
		stage 0,025MΩ, T_{OP}	160	300	580	kHz
temperature coefficient of the feedback resis- tor	TC_R			-3300		ppm/K

The information contained in these documents reflects the current state of the art at the time of publication and is of a provisional nature. MAZeT explicitly reserves the right to make technical changes to the equipment and components described in the documentation. Before starting developments, please contact our sales to get up-to-date information.

DOC. NO:
DB-06-202E

Page 8 of 15

NO.	ISSUE	APPROVED
1	V 2.1	2009-02-26

Parameter	Symbol	Condition	min.	typ.	max.	Unit
offset voltage	V_{OFF}^6	T_{OP}	-10		10	mV
capacitive load at VOUT<X>	C_{LOAD}	$I_{LOAD} < 0.5mA$ per output			50	pF
pull down current SW1, SW2, SW3, SW4, PD	I_{PDPAD}	digital inputs			200	μA
tolerance of the feed- back resistors between the four channels	TOL_R^7	DC input current; for all stages	1		10	%

7.4 Maximum Conditions

Violations of absolute maximum conditions are not allowed under any circumstances; otherwise the IC can be destroyed. All voltages are referenced to GND = 0V.

Parameter	Symbol	min.	max.	Unit
power supply	VDD	0.3	7.0	V
input and output voltages	\Rightarrow IC-pinning	0.3	VDD+0.3	V
input high level	V_{IH}	0.7*VDD	VDD+0.3	V
input low level	V_{IL}	-0,3	0,8	V
power dissipation	POP		0.025	W
standard Operating temperatures ⁸	TOP	-20	+ 100	$^{\circ}C$
storage temperature	TSTG	-40	+ 100	$^{\circ}C$

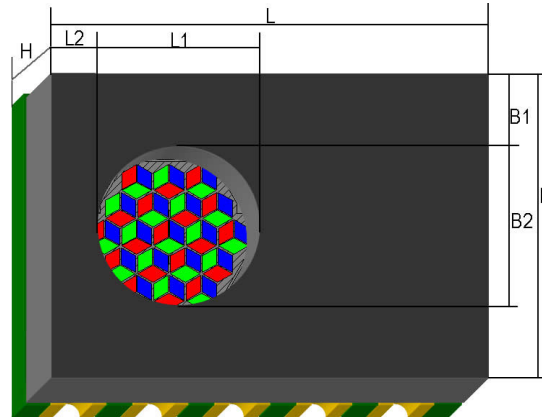
⁶ $V_{OFF} = V_{OUT} < X > - V_{REF}$; results from input offset voltage and input leakage current

⁷ up to max. 1% available on request

⁸ special on request

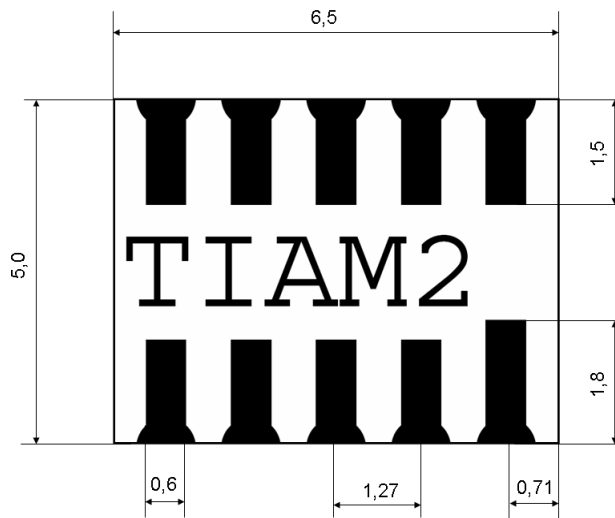
VERSION		
NO.	ISSUE	APPROVED
1	V 2.1	2009-02-26

8 PACKAGE AND OUTLINE DIMENSIONS

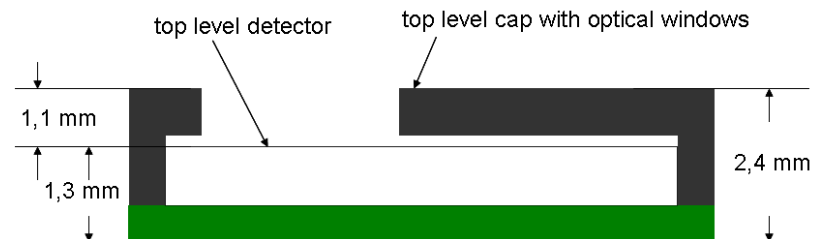


Sizes of packaged TIAM2

	H	L	L1	L2	B	B1	B2
mm	2,40	6,50	2,00	0,95	5,00	1,50	2,00
Tol.	±0,10	±0,10	±0,10	±0,10	±0,10	±0,10	±0,10



Pad dimensions⁹

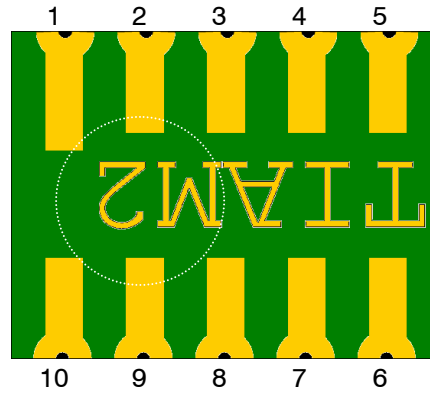


Distance top level cap and detector inside the package

⁹ Please note that on the back side of the package in midsize a blank metallic label with the name of the sensor could be. Please check it and note such a label before you use the components.

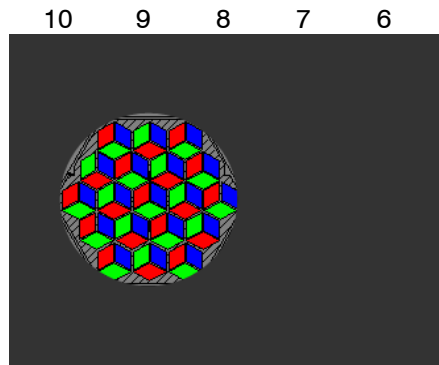
VERSION		
NO.	ISSUE	APPROVED
1	V 2.1	2009-02-26

PIN



PIN configuration TIAM2 - Bottom view

PIN



PIN configuration MTCS-TIAM2 Top View

9 PIN-CONFIGURATION

Pin	Name	IN-/OUTPUT	A/D	Description
1	PD	INPUT	D	power down modus (pull down)
2	VOUT Y	OUTPUT	A	analogue voltage output Y
3	VOUT Z	OUTPUT	A	analogue voltage output Z
4	VOUT X	OUTPUT	A	analogue voltage output X
5	SW3	INPUT	D	input 3 for adjustment of transimpedance of MTI-amplifier (pull down)
6	VDD	INPUT	D/A	power supply
7	SW2	INPUT	D	input 2 for adjustment of transimpedance of MTI-amplifier (pull down)
8	SW1	INPUT	D	input 1 for adjustment of transimpedance of MTI-amplifier (pull down)
9	GND	INPUT	D/A	ground
10	VREF	INPUT	A	reference voltage

VERSION		
NO.	ISSUE	APPROVED
1	V 2.1	2009-02-26

10 SOLDERING PROFILE

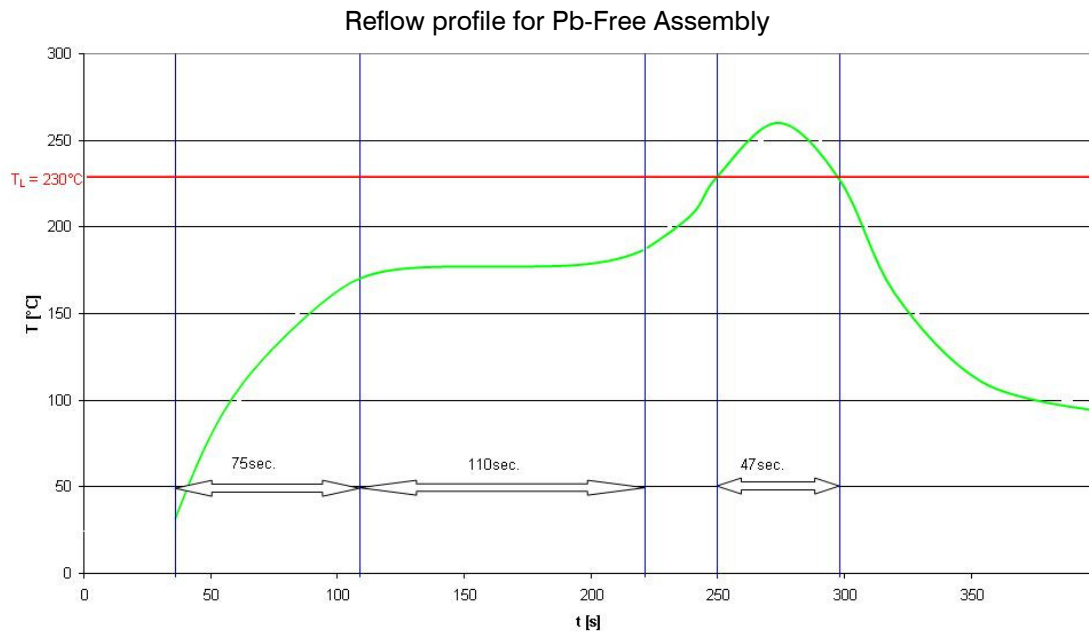


Figure 10 Recommended reflow SOLDERING PROFILE

11 HANDLING AND STORAGE

Care should be taken to keep the sensor surface clean. Dust, scratches will adversely affect the sensor parameters. Sensors should be handled as optical device. It is important to use normal ESD handling and precautions for ESD sensitive devices. Each device is baked prior packing for shipment (24hours at 125°C). Devices are packed in a sealed aluminized envelope with humidity indicator card and desiccant. Keep the opening and handling time of moisture bag as short as possible. We recommended re-baking before soldering.

12 PACKING INFORMATION

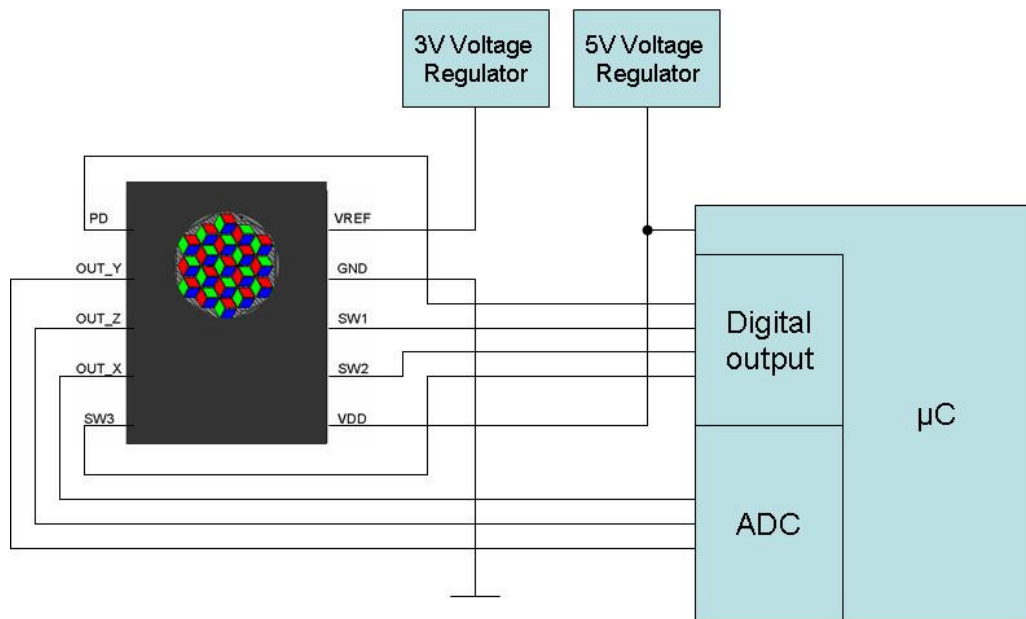
Standard packing type is tube. Otherwise has to be cleared with sales, see chapter 14.

NO.	ISSUE	APPROVED
1	V 2.1	2009-02-26

13 APPLICATION NOTE

13.1 Circuit

In the following there is an example for connection of TIAM 2 to a μC -based measurement system. Please note the necessary connection of Vref (e.g. 3V, depend on the used ADC) and Vdd (e.g. 5V). Alternatives are possible within the settings (see chapter 7).



The TIAM2 includes a multi-channel amplifier of MAZeT. The amplifier can be switched smoothly to the required amplification stage via μC programming, e.g. if input variables fail to reach or exceed a set threshold. Transimpedance programming is carried out via three inputs and affects all channels simultaneously (see also chapter 6.1). In the following there is a proposition for an algorithm to switch automatically the required amplification via μC .

13.2 Broadband source of lighting

The spectral filters of the color sensor ICs are specialized for applications with broadband source of lighting $>10\text{nm}$. Please ask our sales team before you use our sensor in combination with narrowband luminous sources.

13.3 Angle of incidence

In reliance on the packaging the sensor IC has an aperture angle (beam width) of nearly 90° . Traditional an interference filter works depends on angle of incidence. So a bumped light beam with different angles to vertical until 10° will not causes any filter shifts. Make sure by using lenses or optical holes that the angle of incidence for the sensor device will be smaller than 10° .

VERSION		
NO.	ISSUE	APPROVED
1	V 2.1	2009-02-26

defines: VMIN = 1, VMAX = 8 UMAX = 0x3ff, UMIN = 0x1ff

Values for calculation LimitO and LimitU: Tabvalue[8] = { 4, 5, 2, 2, 3, 2, 2, 1 }

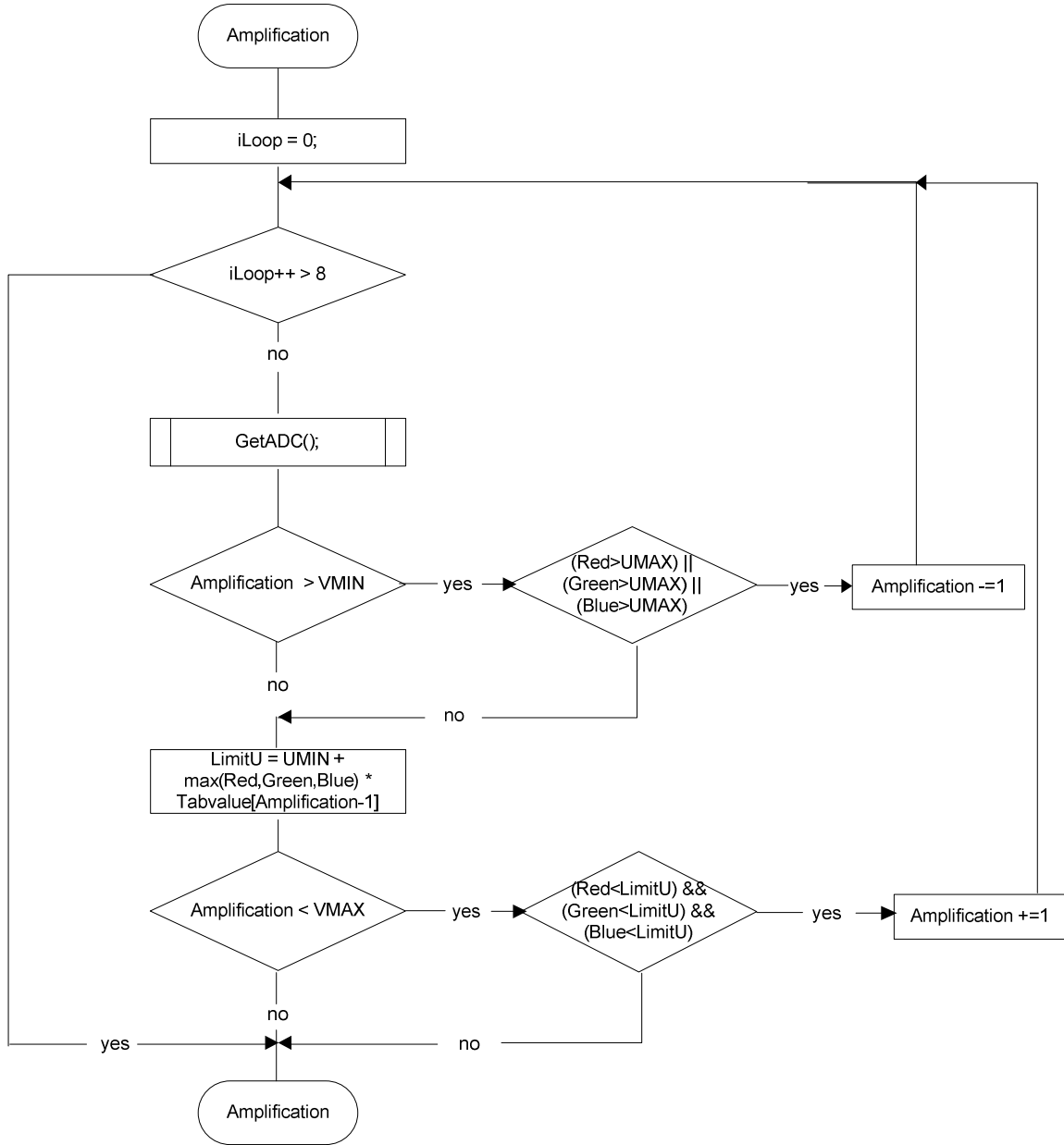


Figure 21 μ C-based Algorithm for calculation of an automatic switch of the 8-staged amplification

VERSION		
NO.	ISSUE	APPROVED
1	V 2.1	2009-02-26

14 ORDERING INFORMATION

True Color sensor with integrated amplifier

MTCS-TIAM2

For further information please contact:

MAZeT GmbH

Sales office:

Göschwitzer Straße 32

07745 JENA

GERMANY

Phone: +49 3641 2809-0

Fax: +49 3641 2809-12

E-Mail: sales@MAZeT.de

URL: <http://www.MAZeT.de>

WARNINGS

Personal Injury – Do not use these products as safety or emergency stop devices or in any other applications where failure of the product could result in personal injury. **Failure to comply with these instructions could result in death or serious injury.**

Misuse of Documentation – The information presented in this data sheet is for reference only. Because these products are under development do not use this document as product installation guide. Before you start any development ask your supplier for the latest version of this sheet. **Failure to comply with these instructions could result in death or serious injury.**

ESD Warning – Standard CMOS handling precautions should be observed to avoid static discharge.